

NetCamCenter

NetViewer

User Manual

Webcam Corp.

Ver. Preview 2

Information in this document is subject to change without notice.
All trademarks are owned by respective company.

Webcam Corp. makes no warranty of any kind with regard to this material, including, but not limited to, the implied warranties of merchantability and fitness for a particular purpose. Webcam Corp. shall not be liable for errors contained herein or for incidental or consequential damages in connection with the furnishing, performance, or use of this manual.

Copyright ©2008 Webcam Corp. All rights reserved.

<http://www.webcamssoft.com>

Table of Contents

About NetCamCenter NetViewer	3
System requirements	3
Installation	4
Installing NetCamCenter NetViewer	4
Getting Started	5
Running NetCamCenter NetViewer for the first time	5
Toolbar overview	9
Controlling PTZ camera	10
Searching for recorded video	11
Search video	11

About NetCamCenter NetViewer

System Requirements

Software requirement

- Microsoft Windows XP SP2 and SP3 (Home and Professional), 2003, Vista (32 bit)
- Microsoft DirectX 9.0 or above
- NetCamCenter Professional, NetCamCenter Basic or NetCamCenter for WCSA400
- MPEG4 and H.264 codec (Required to view video recorded with MPEG4 and H2.64 codec. You can download and purchase MPEG4 decoder filter from 3ivx or DivX, H.264 from Axis or CoreAVC.)

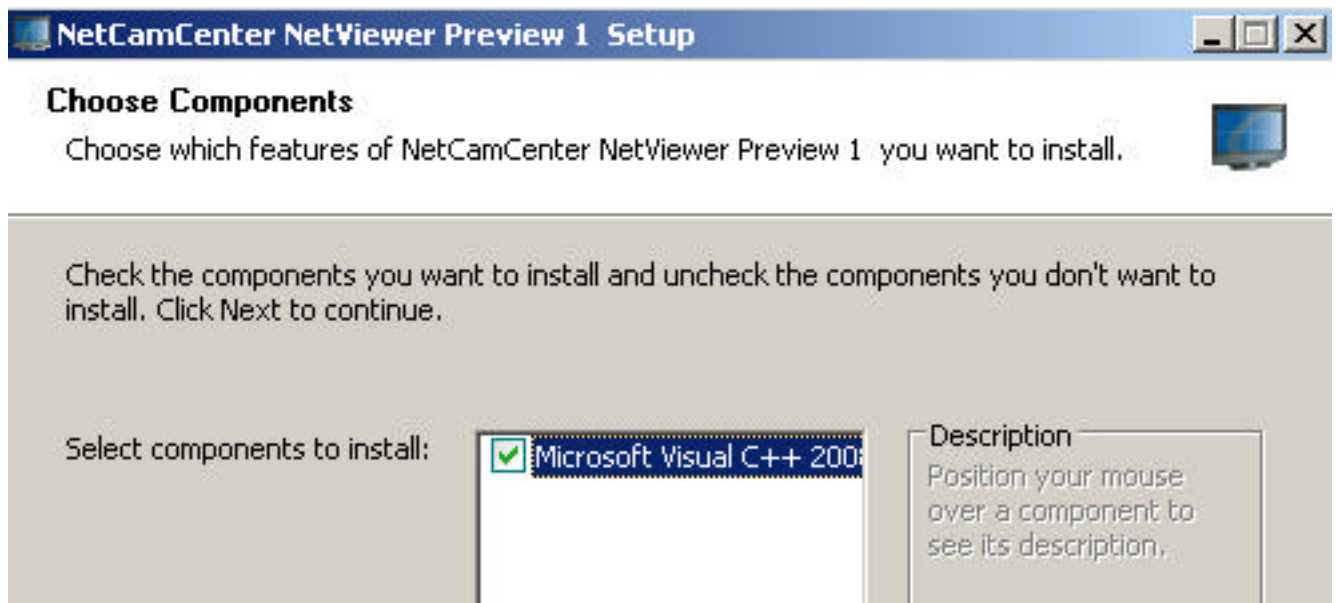
Minimum hardware requirements

- At least P4 1.5 GHz, depends on the actual settings and usage. E.g. the more camera, the higher the resolution and frame rate requires more processing power.
- A network card
- At least 32 MB free RAM plus at least 24M for each camera running at 320x240 resolution. E.g. for 4 camera version, each camera running at 320x240, then at least $32M + 24M \times 4 = 128 M$ free memory is required.
- Display card with DirectX 9, 64 MB RAM at least, resolution 1024 x 768 pixels or higher
- Internet connection is required for remote access

Installation

Installing NetCamCenter NetViewer

- Open **MY COMPUTER**. Right click on the CD-ROM drive that contains the NetCamCenter installation CD and select "Explore."
- Open the **exe** folder, and locate the file **nccnvSetup.exe**. Double click this file to start installation procedure (You can also download the viewer from <http://www.webcamsoft.com>)
- Click on nccnvSetup.exe to begin installation.
- During the installation process, you will see the following dialog box. If you have installed the component before, you can uncheck the box to skip the component installation.



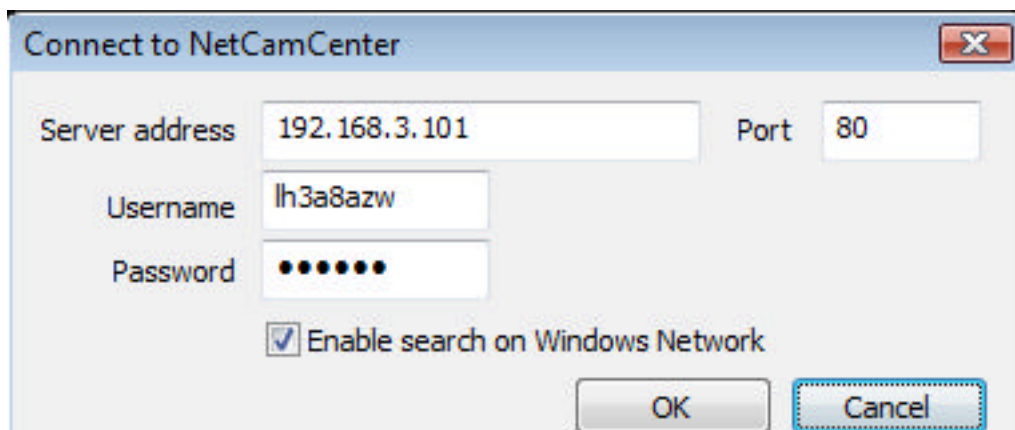
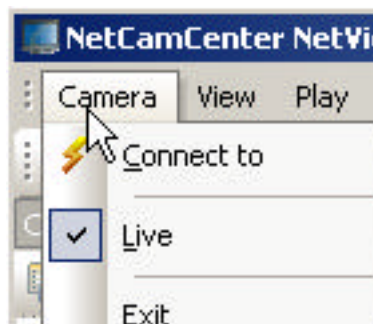
- Click on **Next** to continue the installation.

Getting Started

Running NetCamCenter NetViewer for the first time

NetCamCenter NetViewer allows you to connect to NetCamCenter built-in Web server to monitor connected cameras via MJPEG transmission mode. (Audio is not supported.) To start NetCamCenter NetViewer,

- Double click on **NetCamCenter NetViewer** icon on the desktop to start NetCamCenter NetViewer.
- Click **Camera** on the menu.
- Click **Connect to**.



Server address:

Server address is NetCamCenter server's address. It can be:

- **localhost or 127.0.0.1:** You are running NetCamCenter and NetCamCenter NetViewer on the same computer. When doing video search, NetCamCenter NetViewer searches video on your local hard drives.
- **Computer name on Windows Network:** E.g. a computer named "Tom" on a local Windows Network. If "Tom" has NetCamCenter data folders shared, and the your Windows Logon on the computer has access privilege, when conducting video searches, NetCamCenter NetViewer will search the shared folder first, and then try HTTP if searches by shared folder failed.

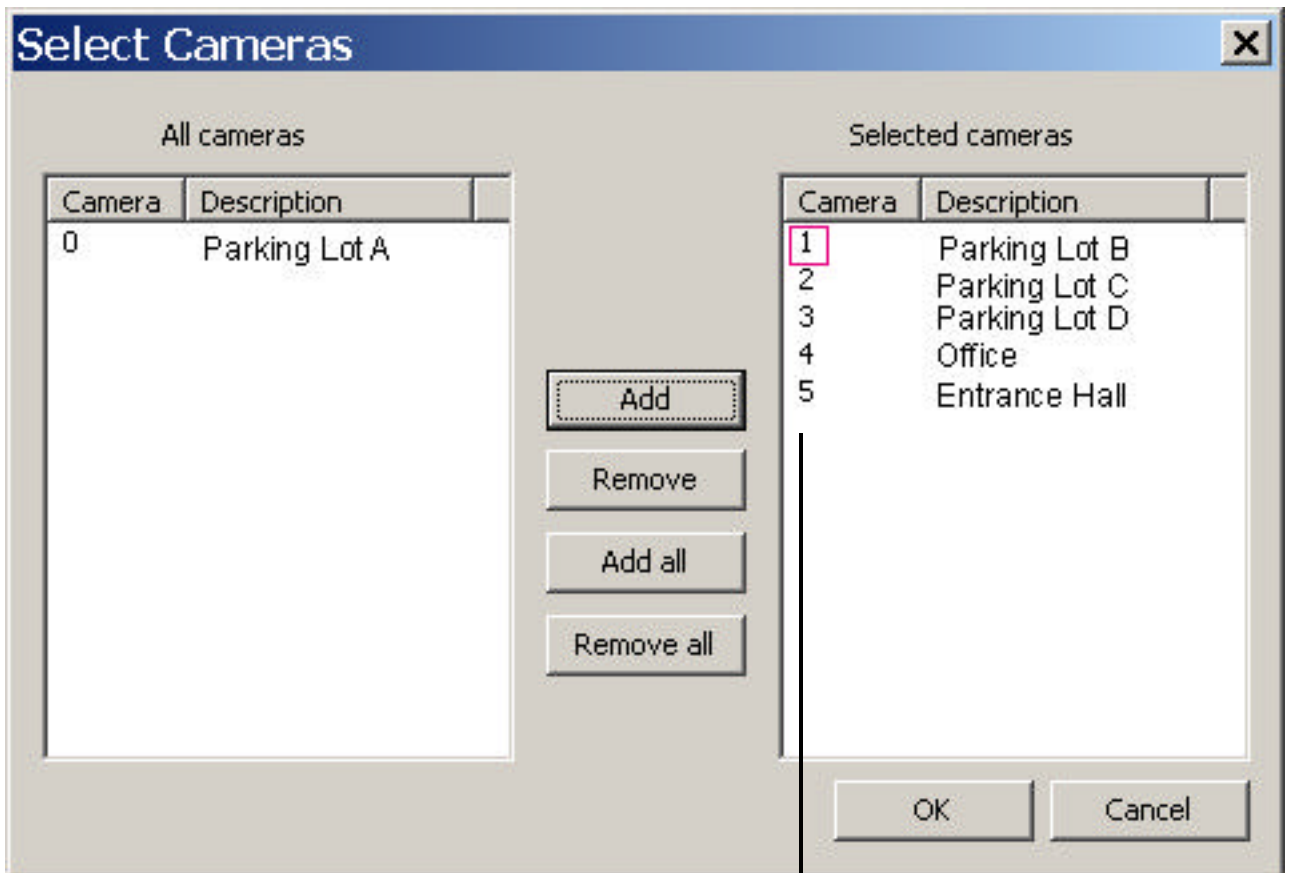
If you record all the video under NetCamCenter data folder (default setting), you can just share the NetCamCenter data folder. (default is c:\Users\Public\Documents\NetCamCenter on Windows Vista) If you record cameras on different locations, you should also share each camera's video recording path.

- **A computer on the Internet:** E.g. 70.5.75.1 or tom.yourdomanname.com in this case, you should disable "**Enable search on Windows Network**". Otherwise when doing video search, NetCamCenter NetViewer will attempt to find the target computer and its share folders on your local network first and this may take quite a while (about several minutes). When "**Enable search on Windows Network**" is disabled. All video searches go thru HTTP and NetCamCenter NetViewer won't be able to seek to exact start time to start playback. Also fast forwarding may not be as efficient, depends on the computer performance and network bandwidth. You should limit the number of selected cameras based on the available bandwidth.

Username and password

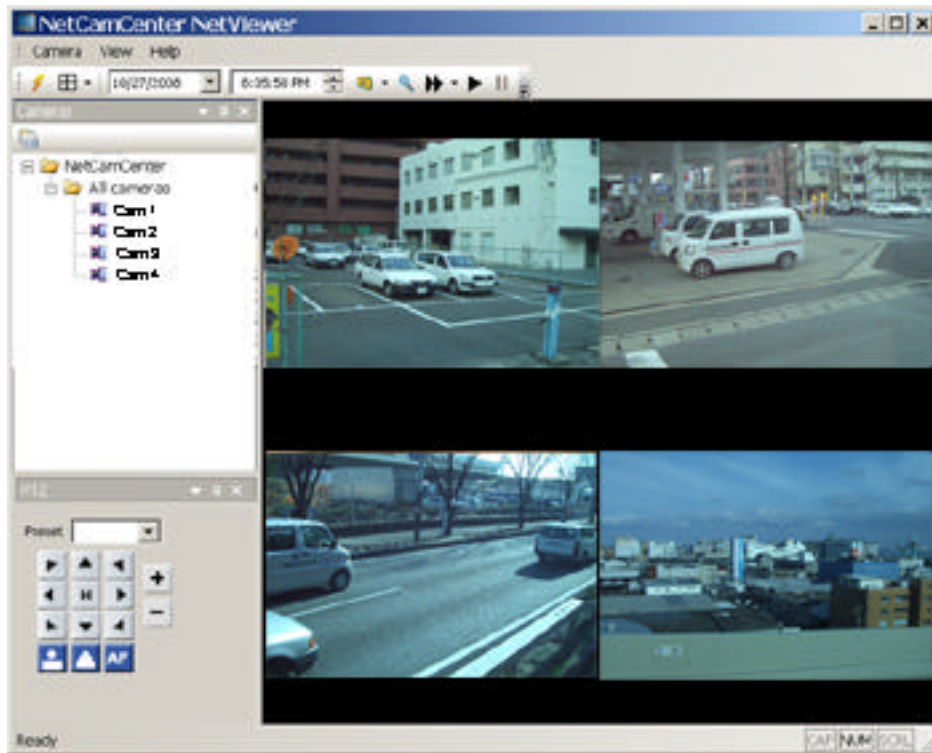
- Enter your username and password if needed.
- Click **OK**. NetCamCenter NetViewer will connect to NetCamCenter server and display the camera names.

- After connecting to NetCamCenter server, you will see the following window allowing you to select cameras.










Click on the number to select the camera you desire to monitor. You can also search the video archive later.

- After selecting the cameras, click **OK**. NetCamCenter NetViewer will start to connect to NetCamCenter and show the live camera images.



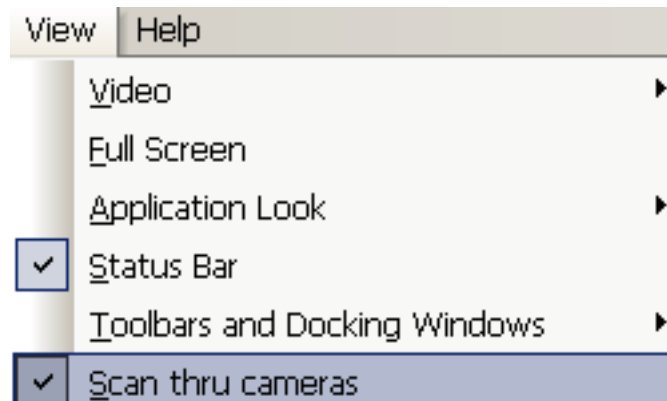
If you want to re-select cameras, click **Connect** button and then select the camera again. On the menu, select **Live**.

Toolbar Overview

	The Connect button to connect to NetCamCenter built-in web server.
	The View button enables you to view the camera in 1x1, 2x2, 3x3 or full screen, etc. You can select 1x1 again to view the next camera.
	The Search Type button to search video by date or event. You can select search by date, alarm or text event.
	The Search button to start searching recordings.
	The Play Speed button to set the play speed. (Note: This feature is bandwidth dependant. If the bandwidth is not enough, this may fail.)
	The Play button to play the video.
	The Pause button to stop playi ng video.

Scan through cameras

This feature switches video windows automatically if there are more camera inputs than available video windows on the screen. After you enable this feature, you can set the number of seconds the view from each camera is displayed.



Controlling PTZ cameras

To adjust the camera position, select a camera in the Cameras pane and click on the arrow button to move the camera.

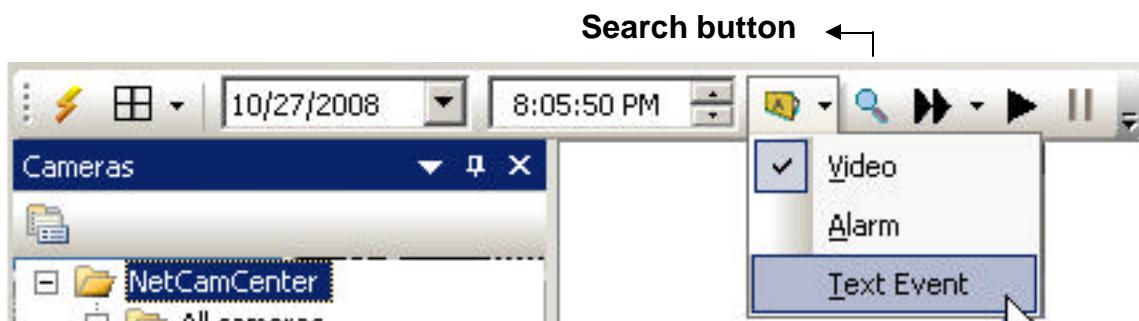
Tips:

You can double-click on the center of a video to display the camera in full screen and double-click again to restore down.

Searching for recorded video

Search video

- To search video, select date and time.
- Select **Search type**. To search alarm video only, select Alarm.
- Click **Search** button.



Play speed

To change the play speed, click Play speed and then select desired speed.

